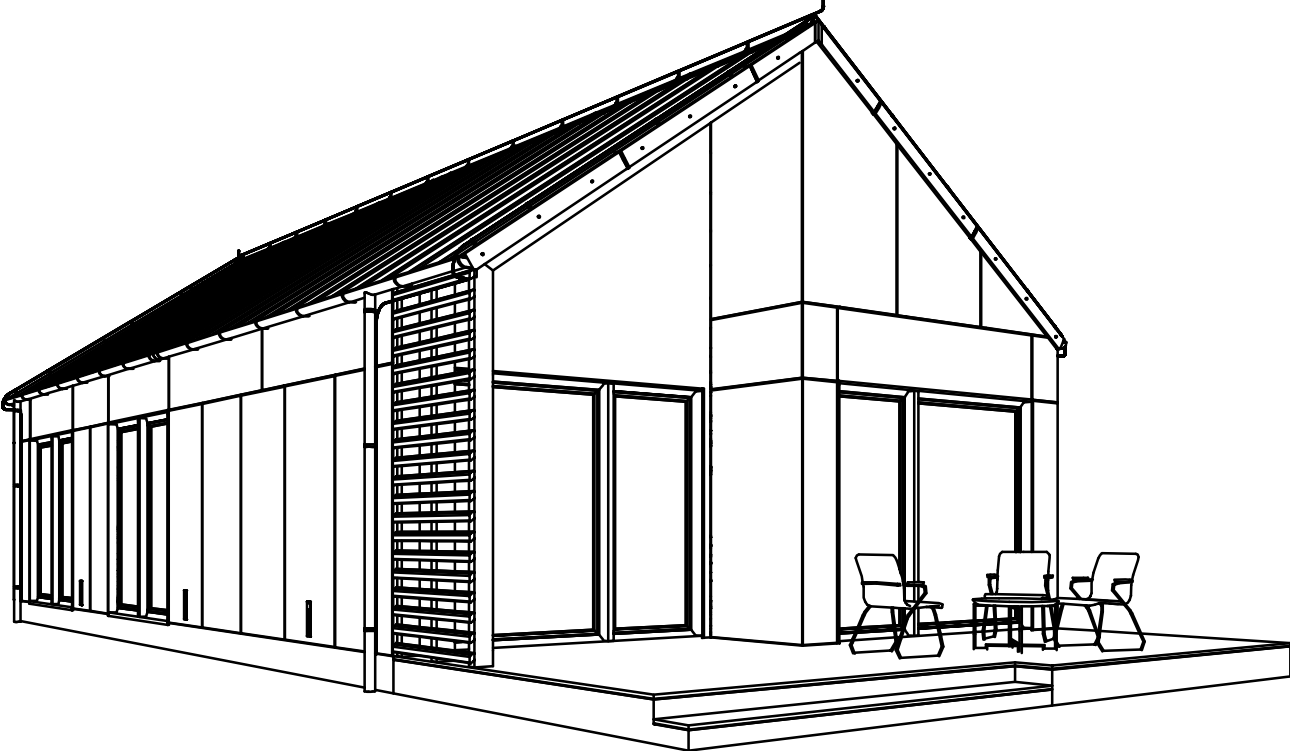


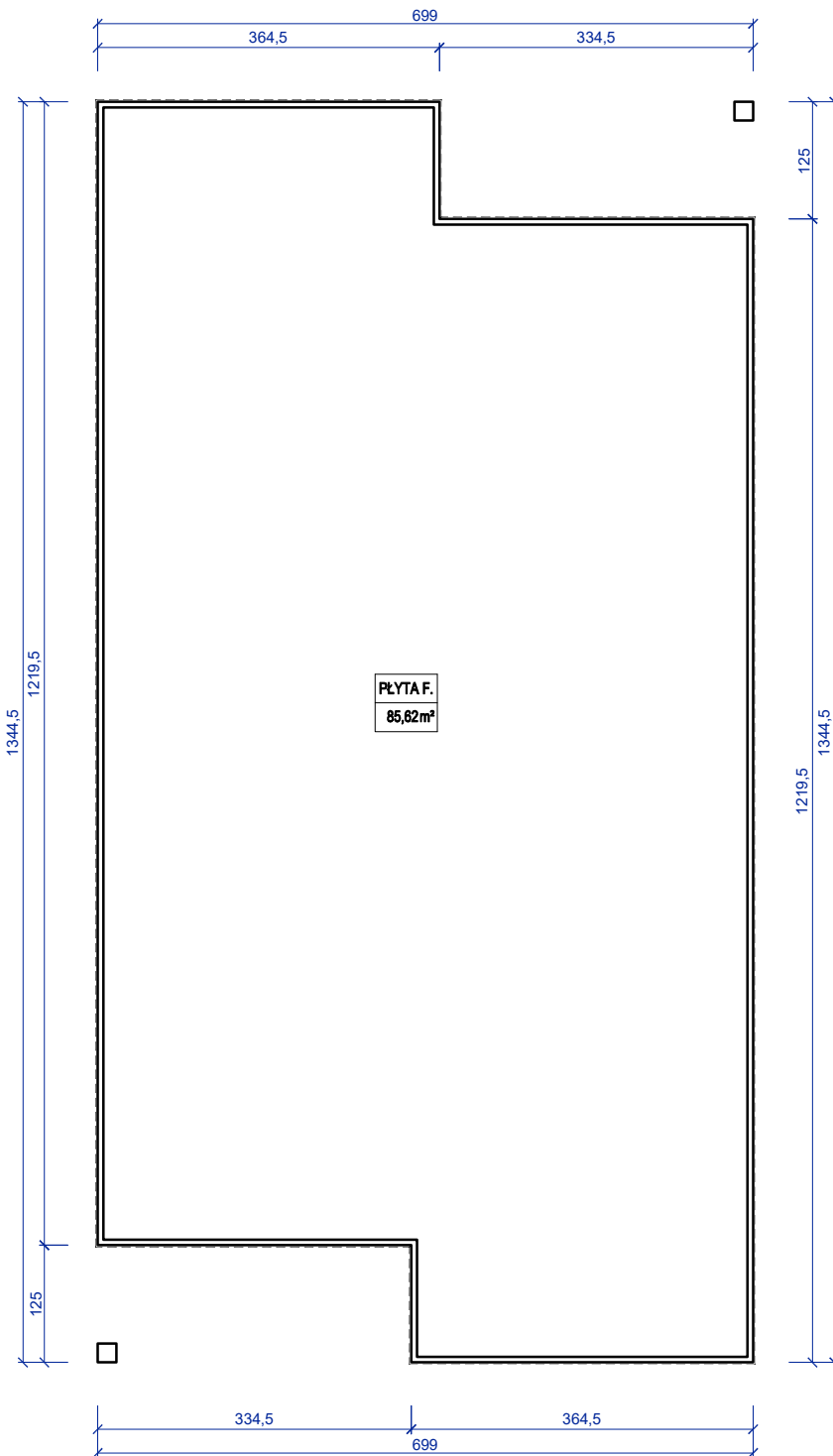
PROJEKT

BARN MODERN 70



PROJEKT

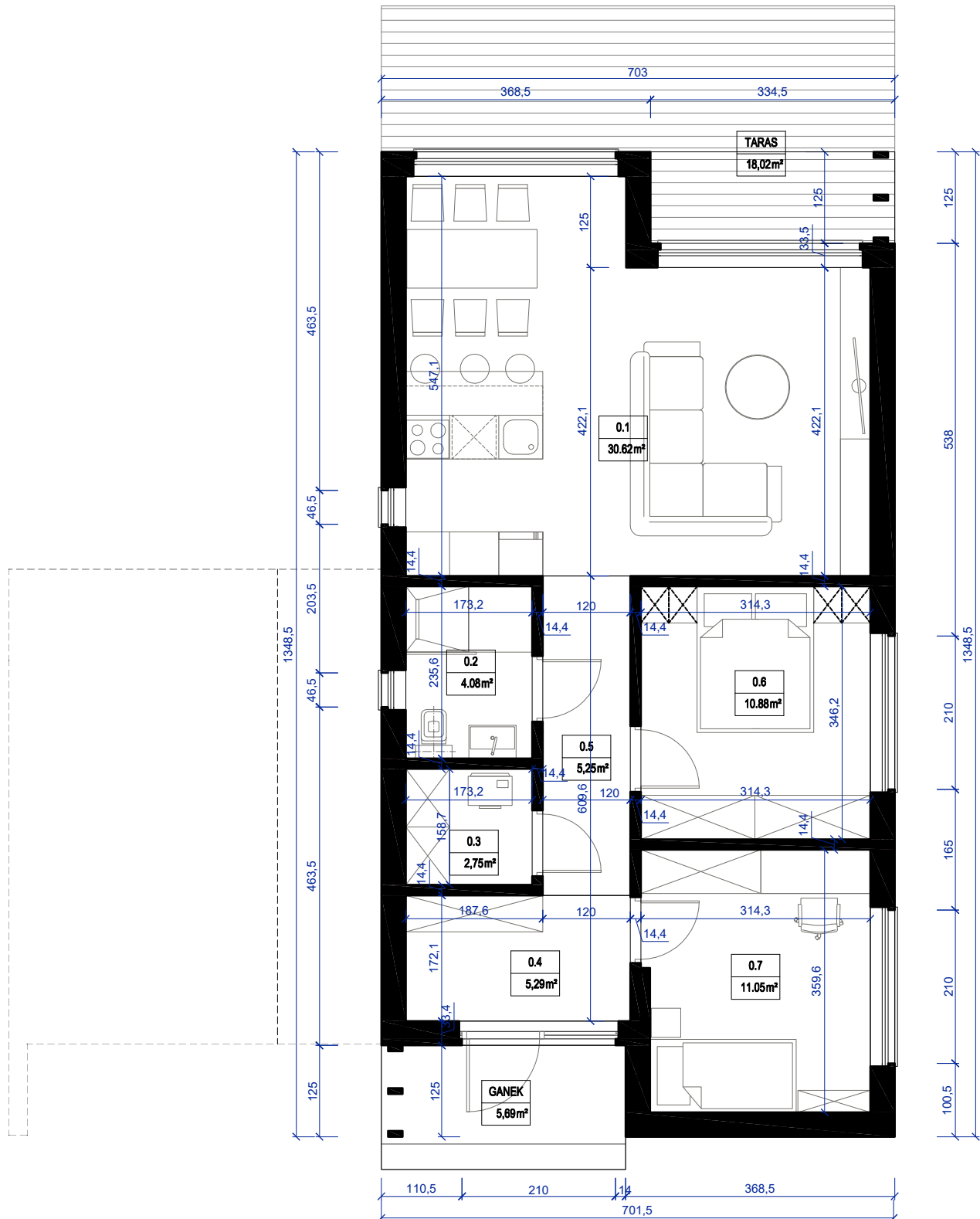
BARN MODERN 70



Powierzchnia płyty fundamentowej= 85,6m²

PROJEKT

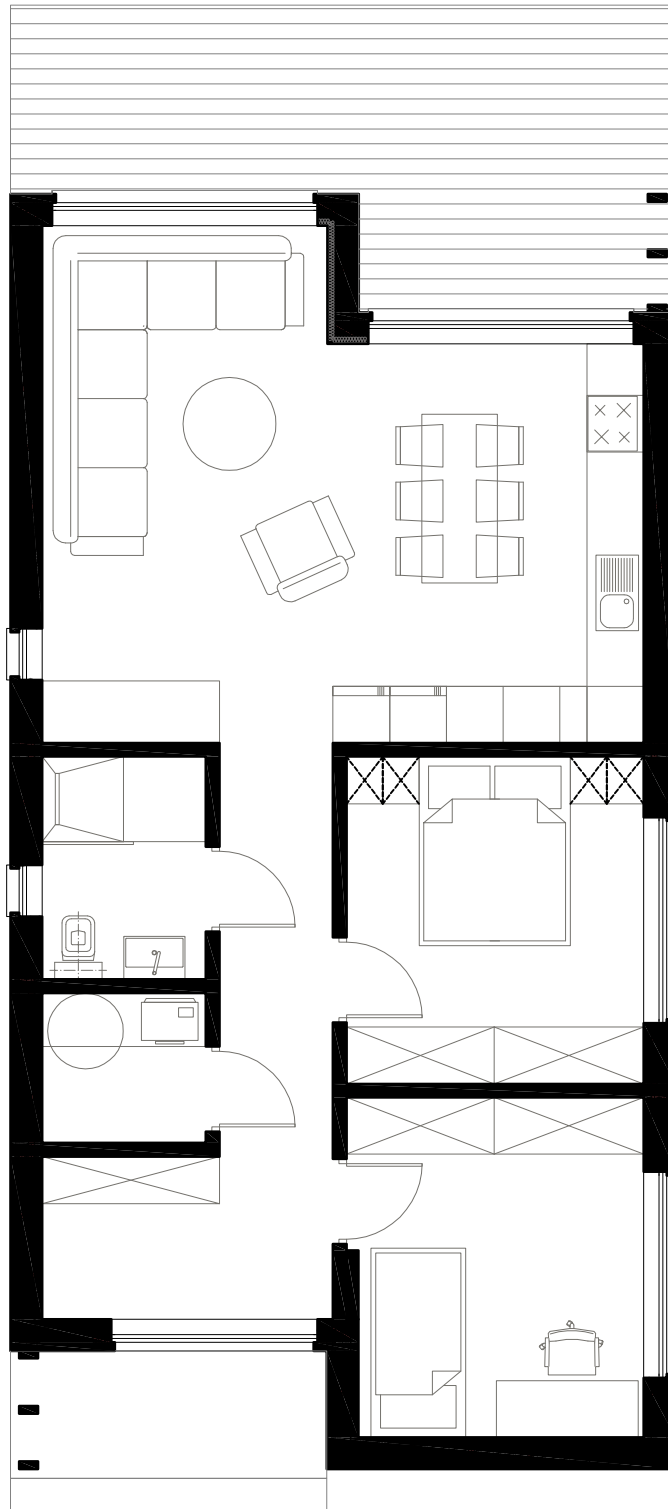
BARN MODERN 70



PU= 69,9m² / P tarasu= 18,0m² / P ganku= 5,7m

PROJEKT

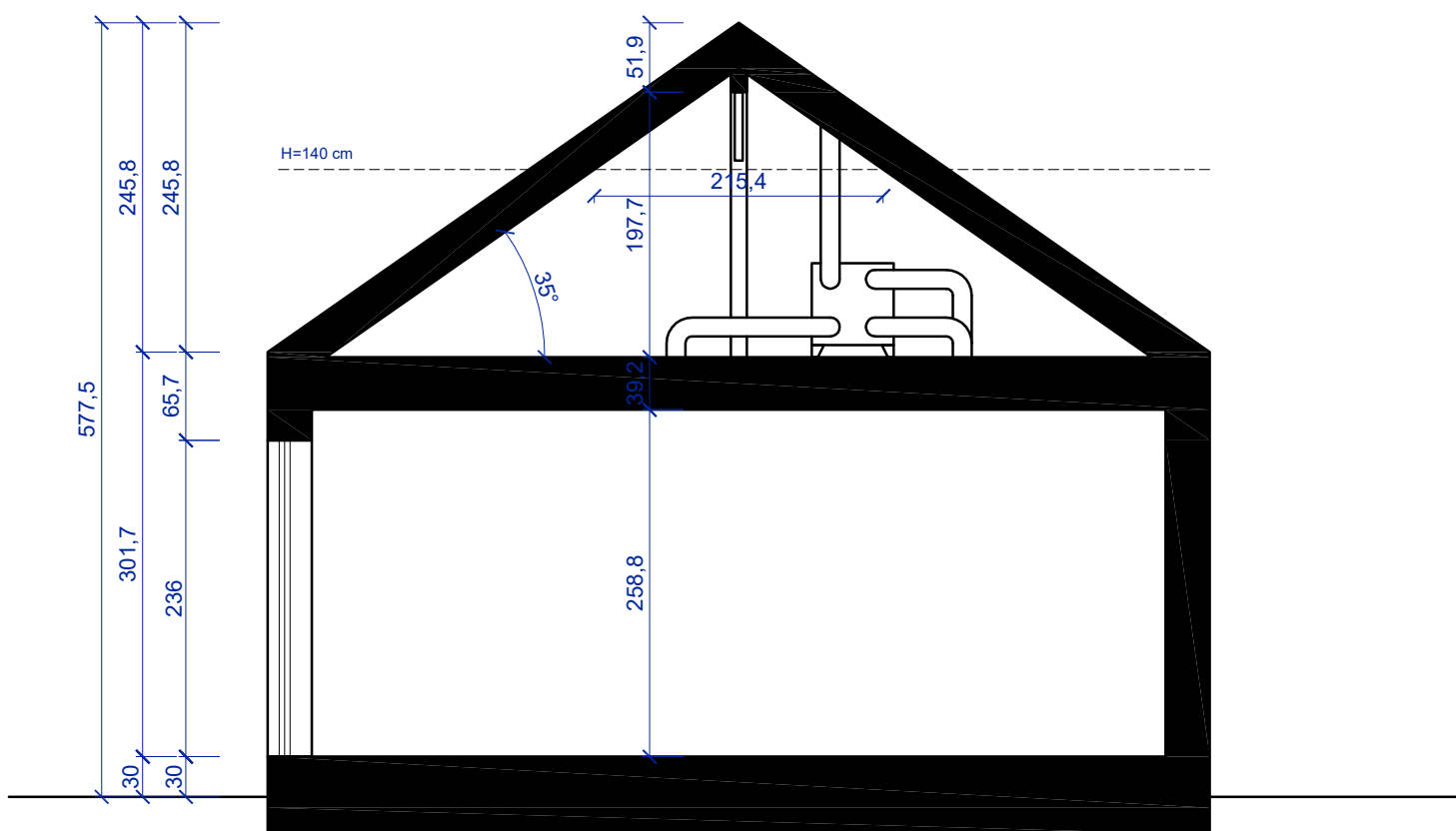
BARN MODERN 70



PU= 69,9m² / P tarasu= 18,0m² / P ganku= 5,7m

PROJEKT

BARN MODERN 70



PZ= 86,4 m² / PC tarasu= 96,3 do 110 m²