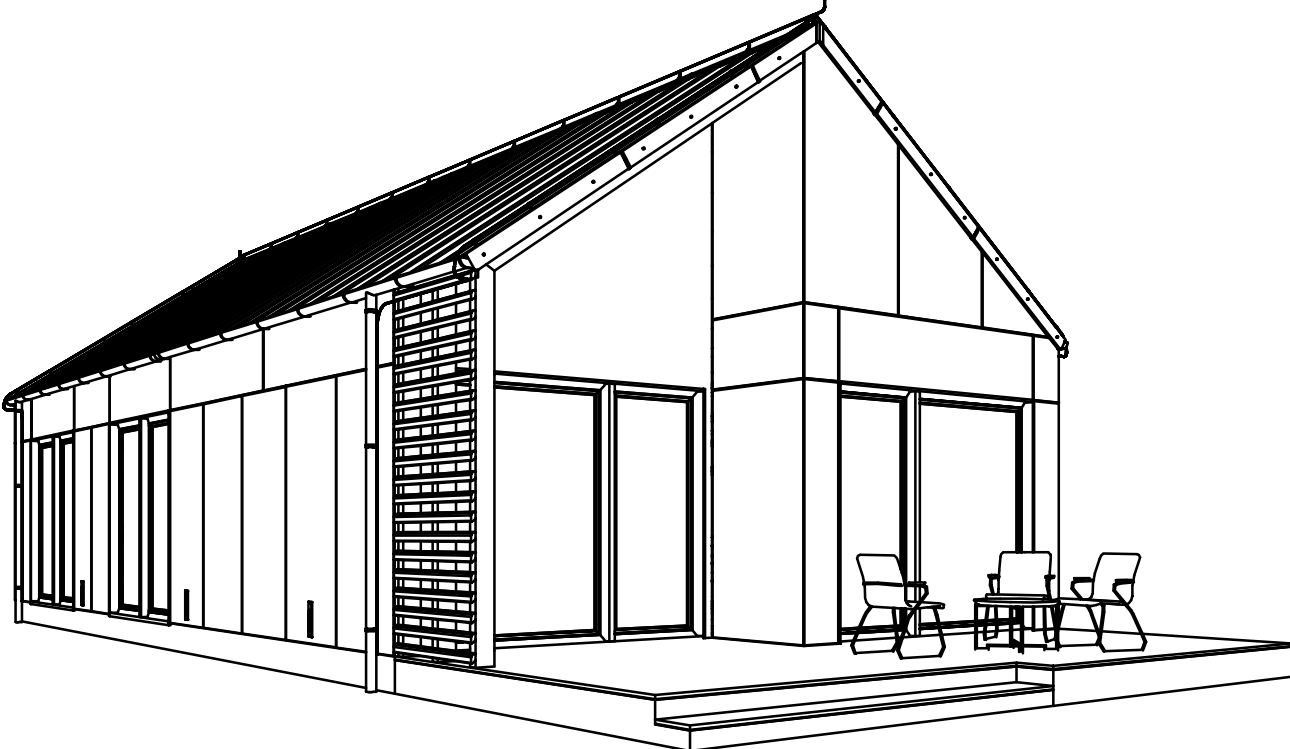


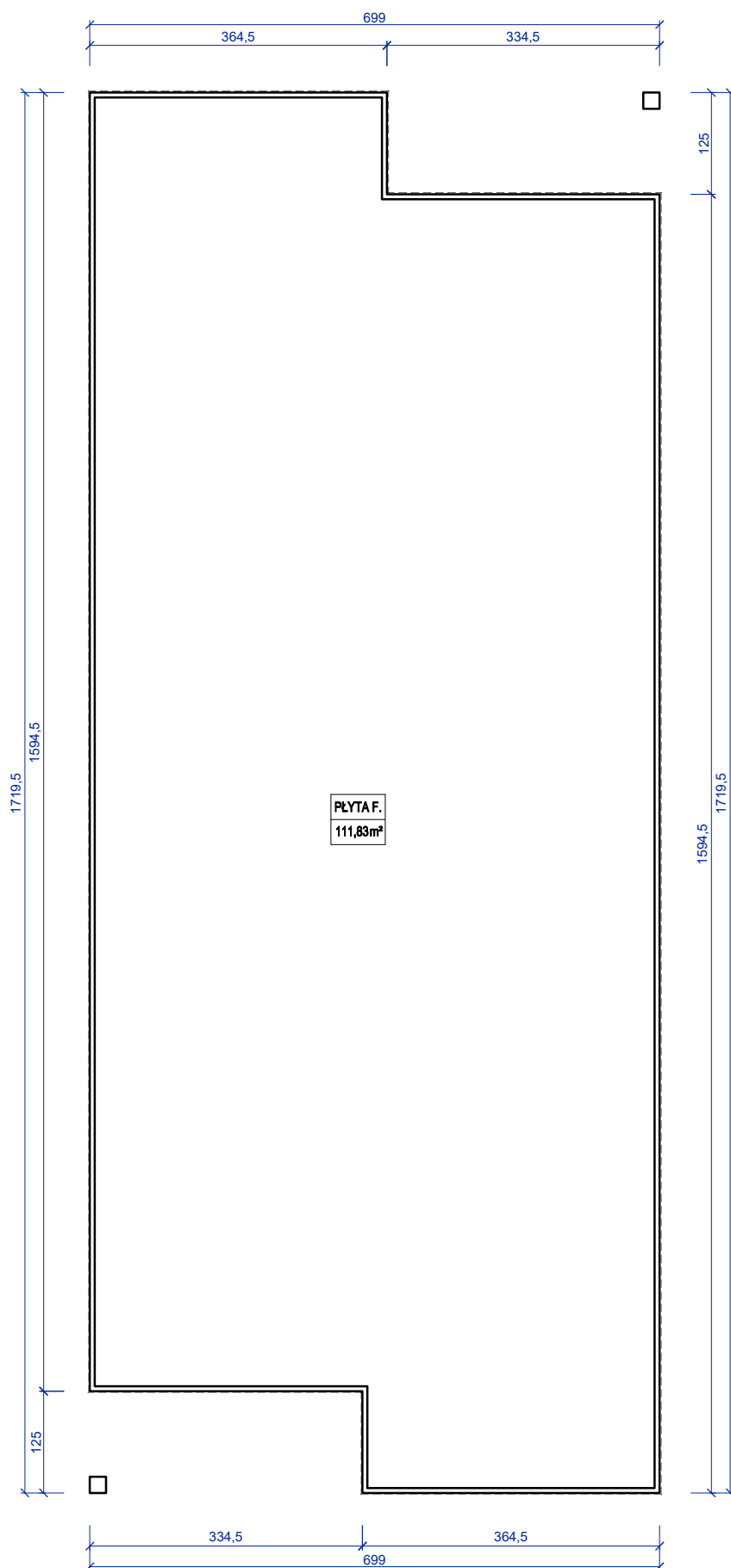
PROJEKT

BARN MODERN 92



PROJEKT

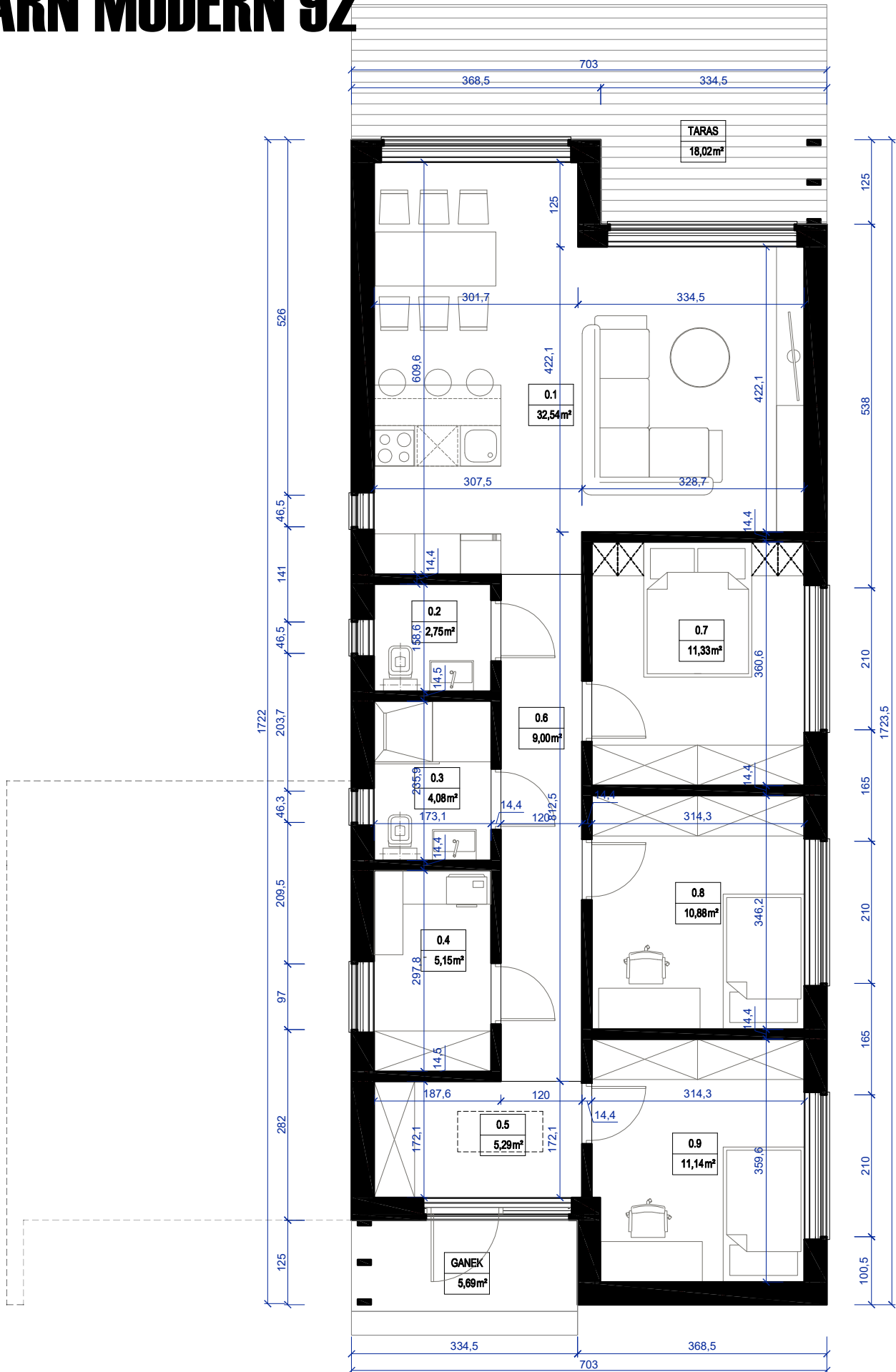
BARN MODERN 92



Powierzchnia płyty fundamentowej= 111,8m²

PROJEKT

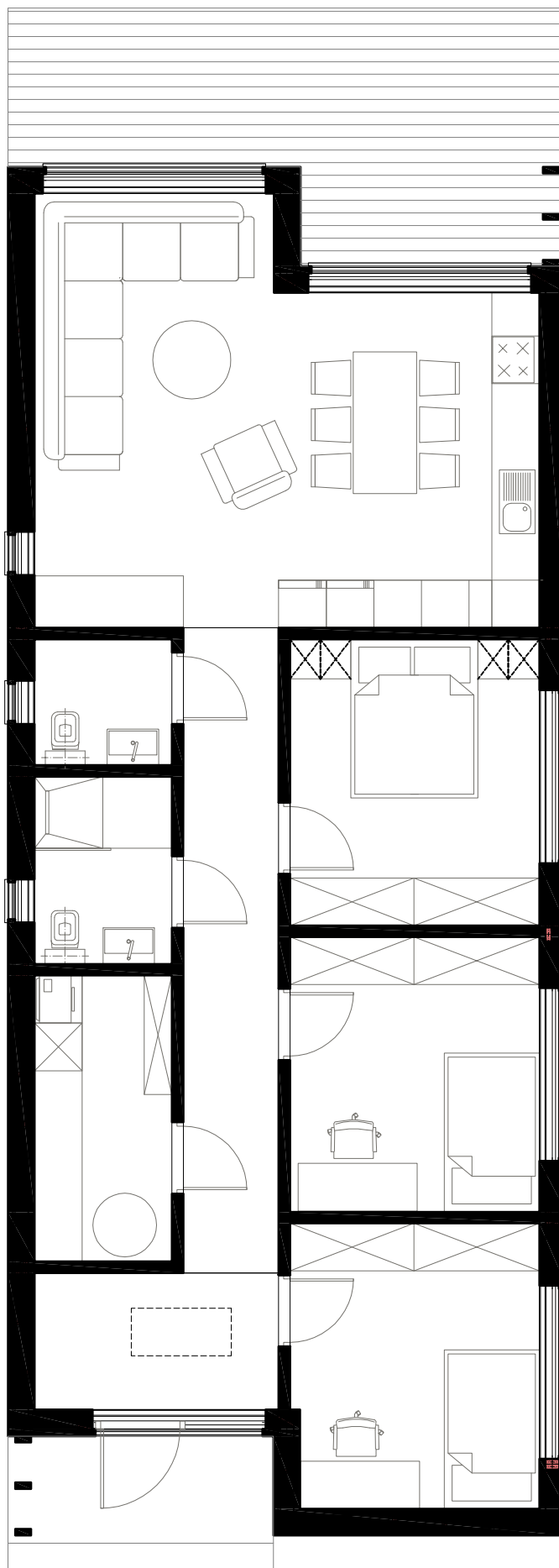
BARN MODERN 92



PU= 92,18m² / P tarasu= 18,0m² / P ganku= 5,7m

PROJEKT

BARN MODERN 92



PU= 92,08m² / P tarasu= 18,0m² / P ganku= 5,7m

