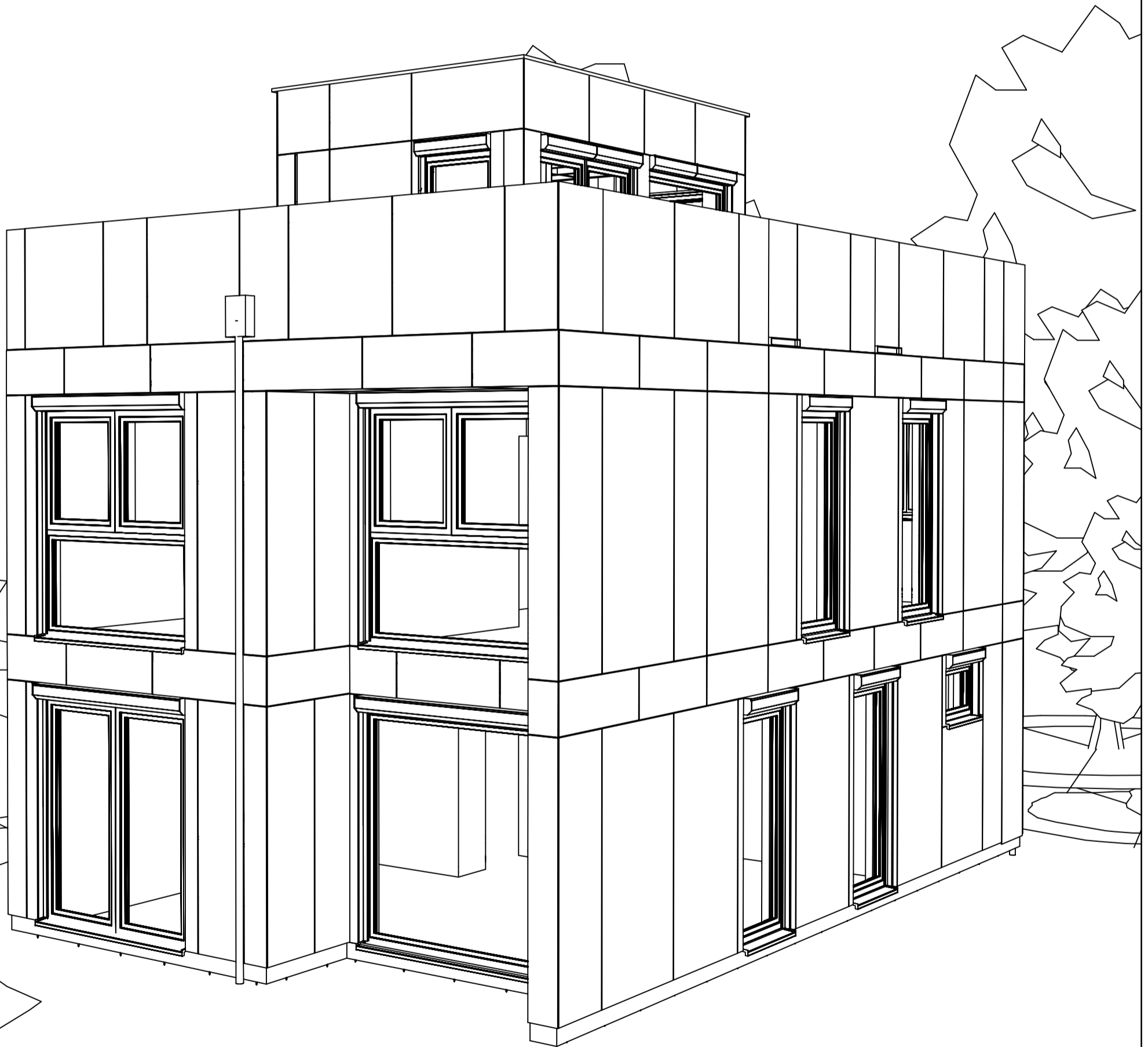


PROJEKT

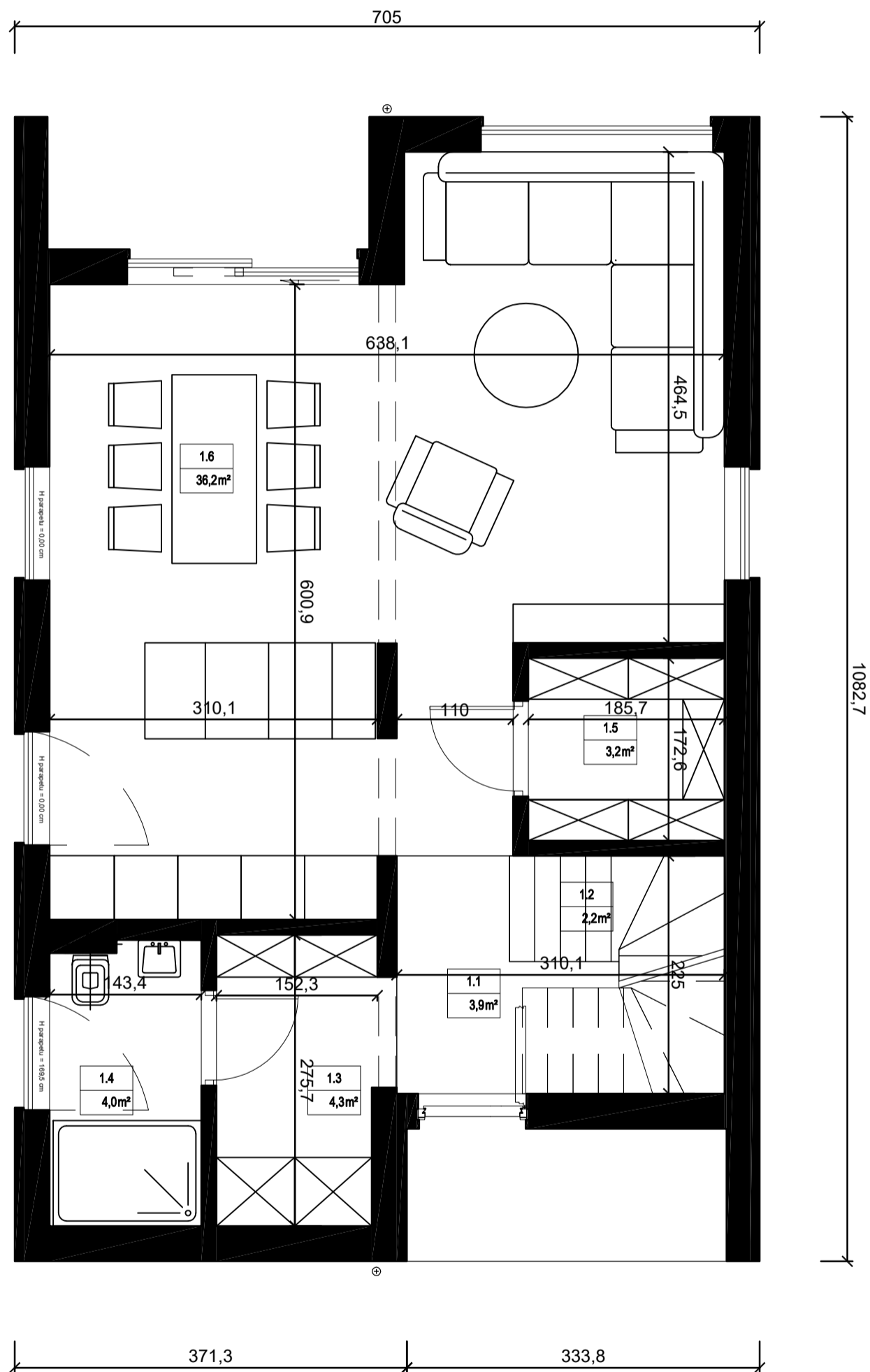
VIENNA 120 LEFT SINGLE



PU = 118,3 m² + 49,4 m² (terrace)

PROJEKT

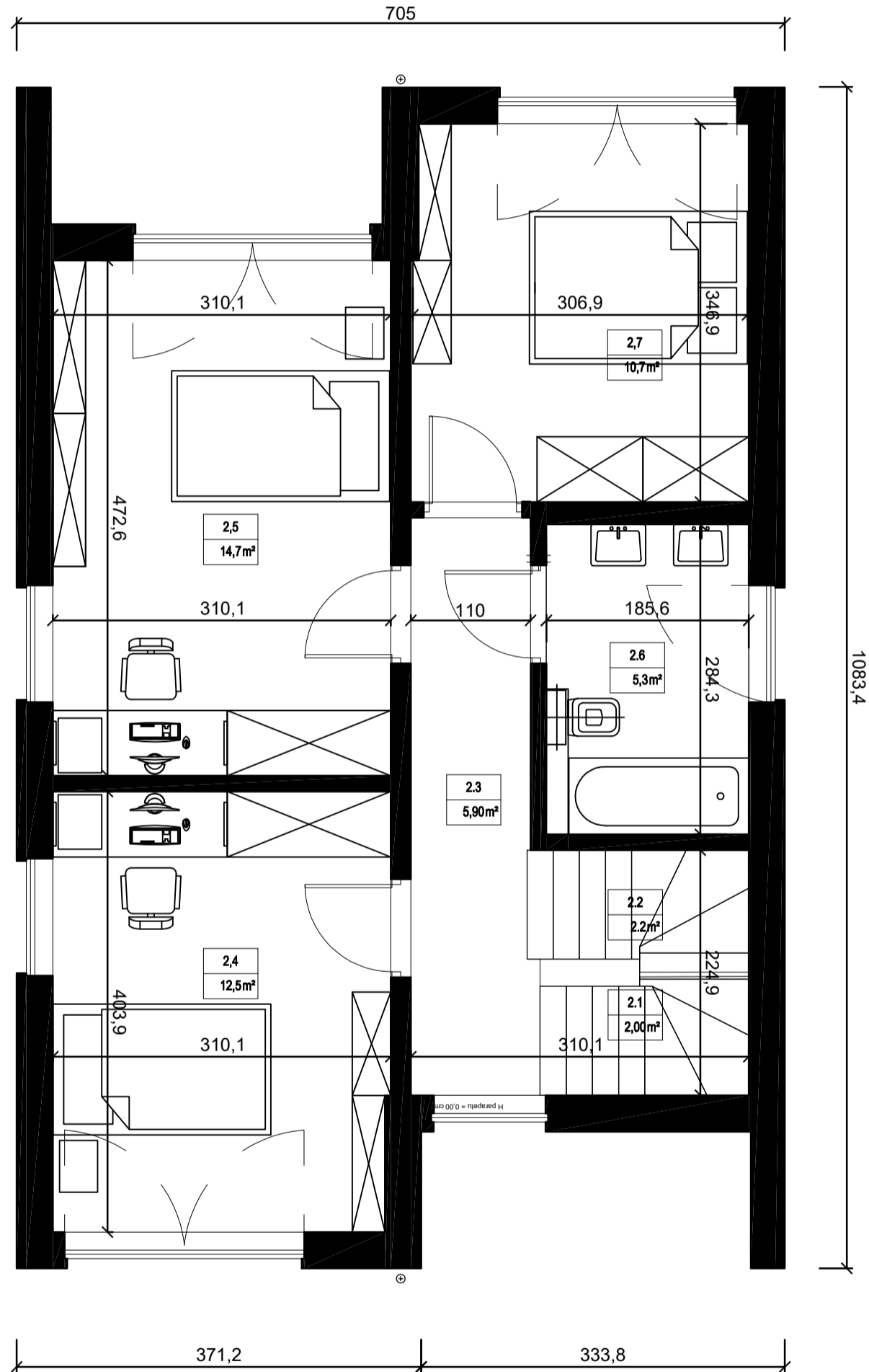
VIENNA 120 LEFT SINGLE



PU = 53,8 m²

PROJEKT

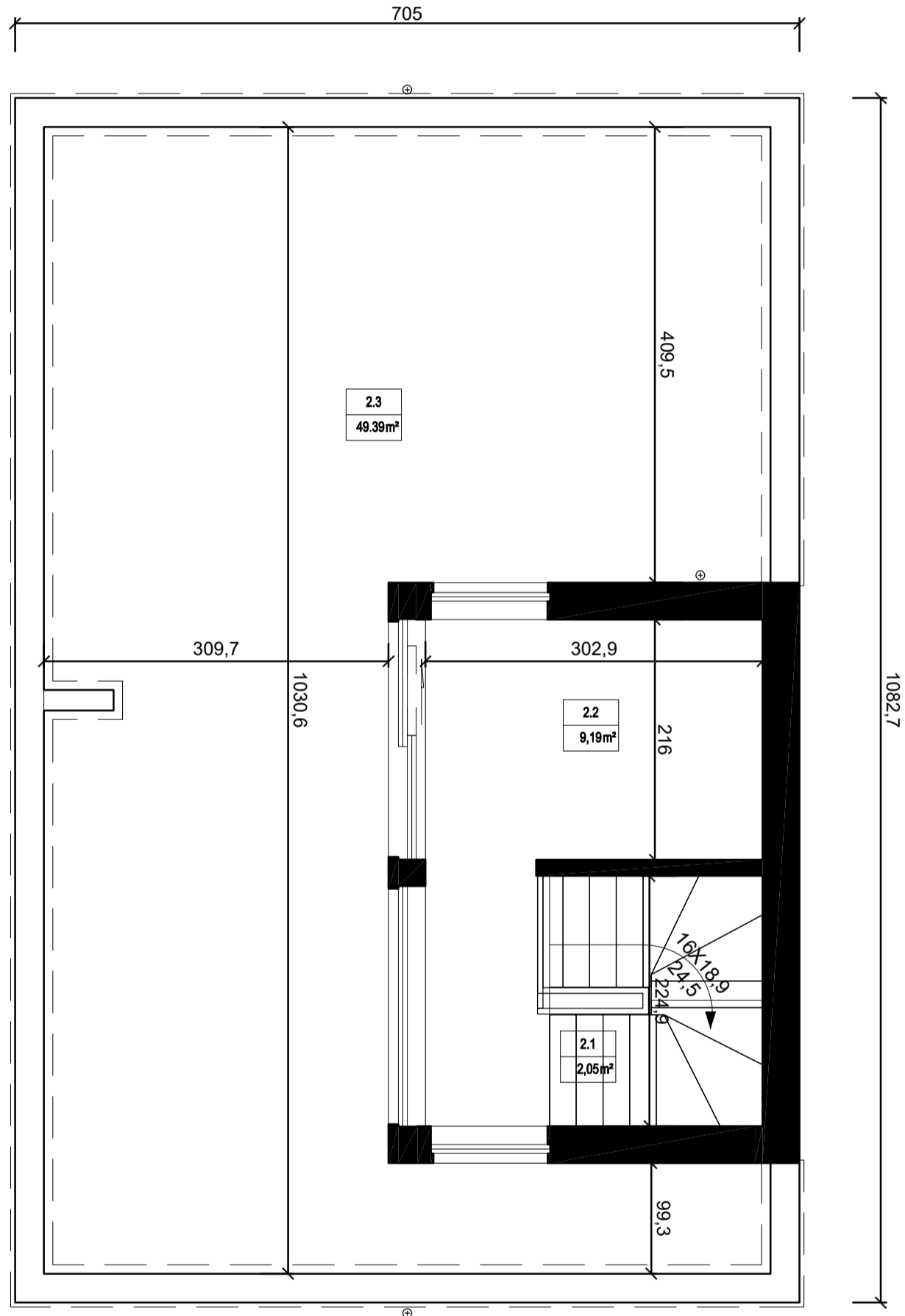
VIENNA 120 LEFT SINGLE



PU = 53,3 m²

PROJEKT

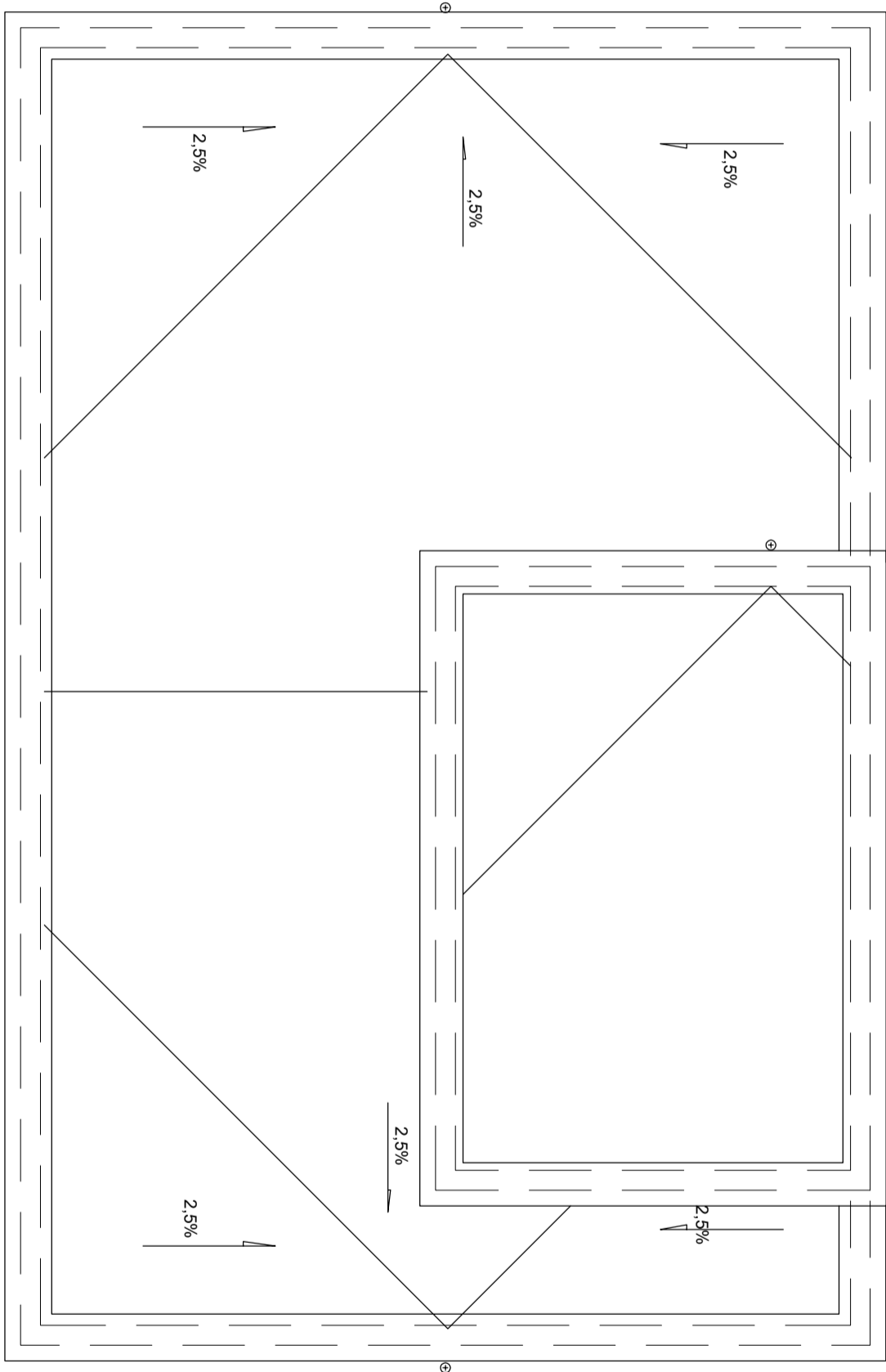
VIENNA 120 LEFT SINGLE



PU = 11,2 m² + 22,1 m² (terrace)

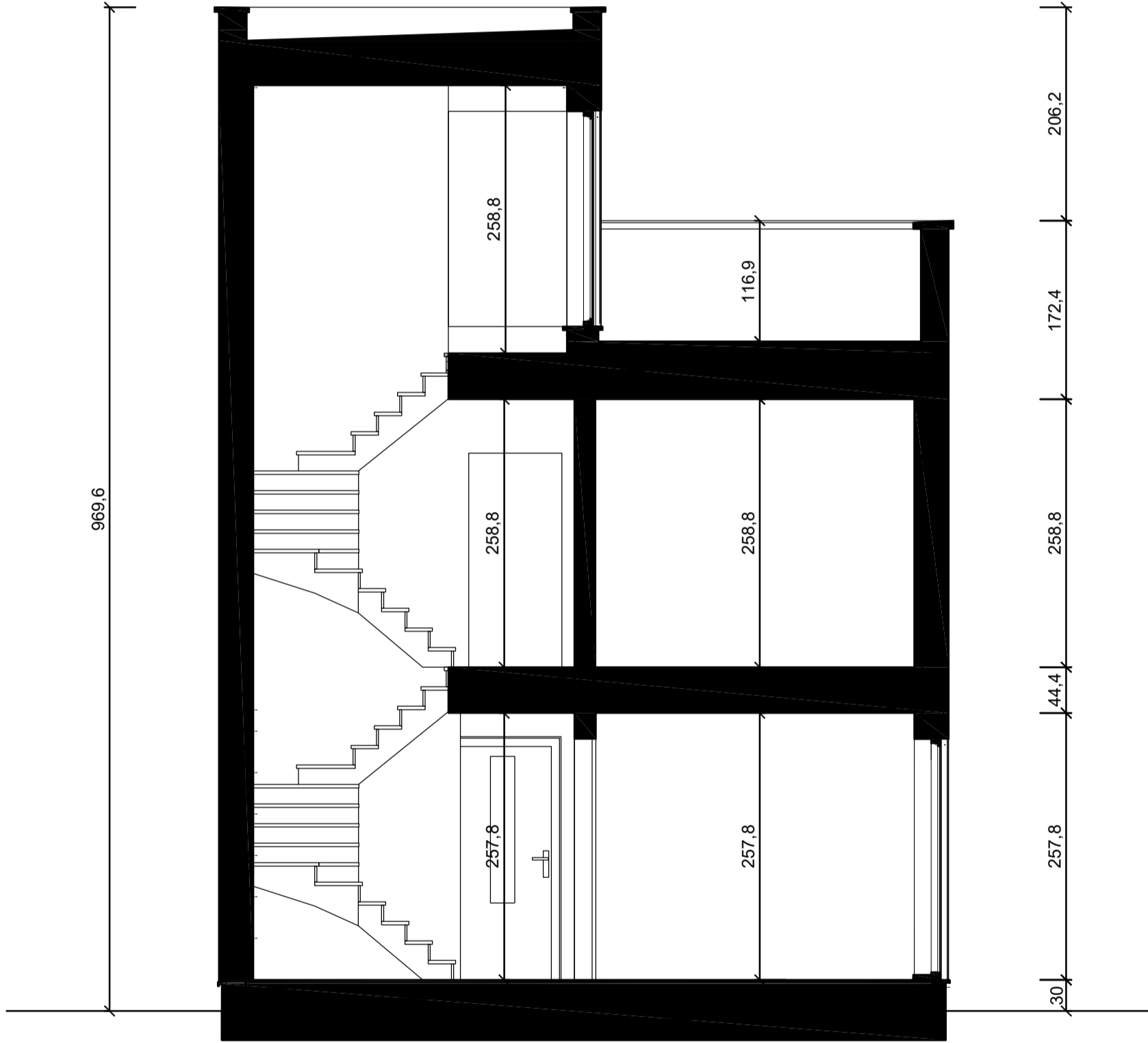
PROJEKT

VIENNA 120 LEFT SINGLE



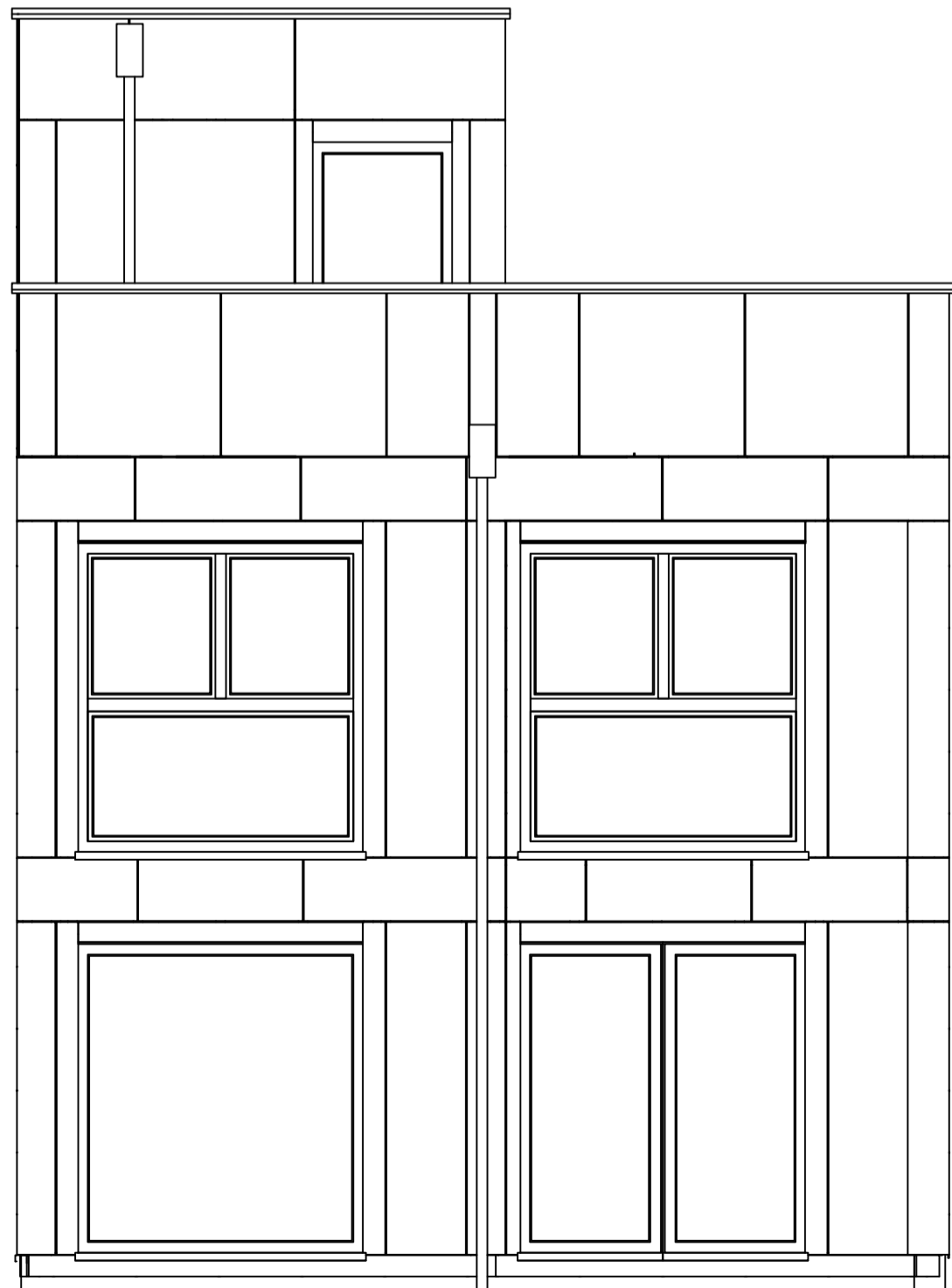
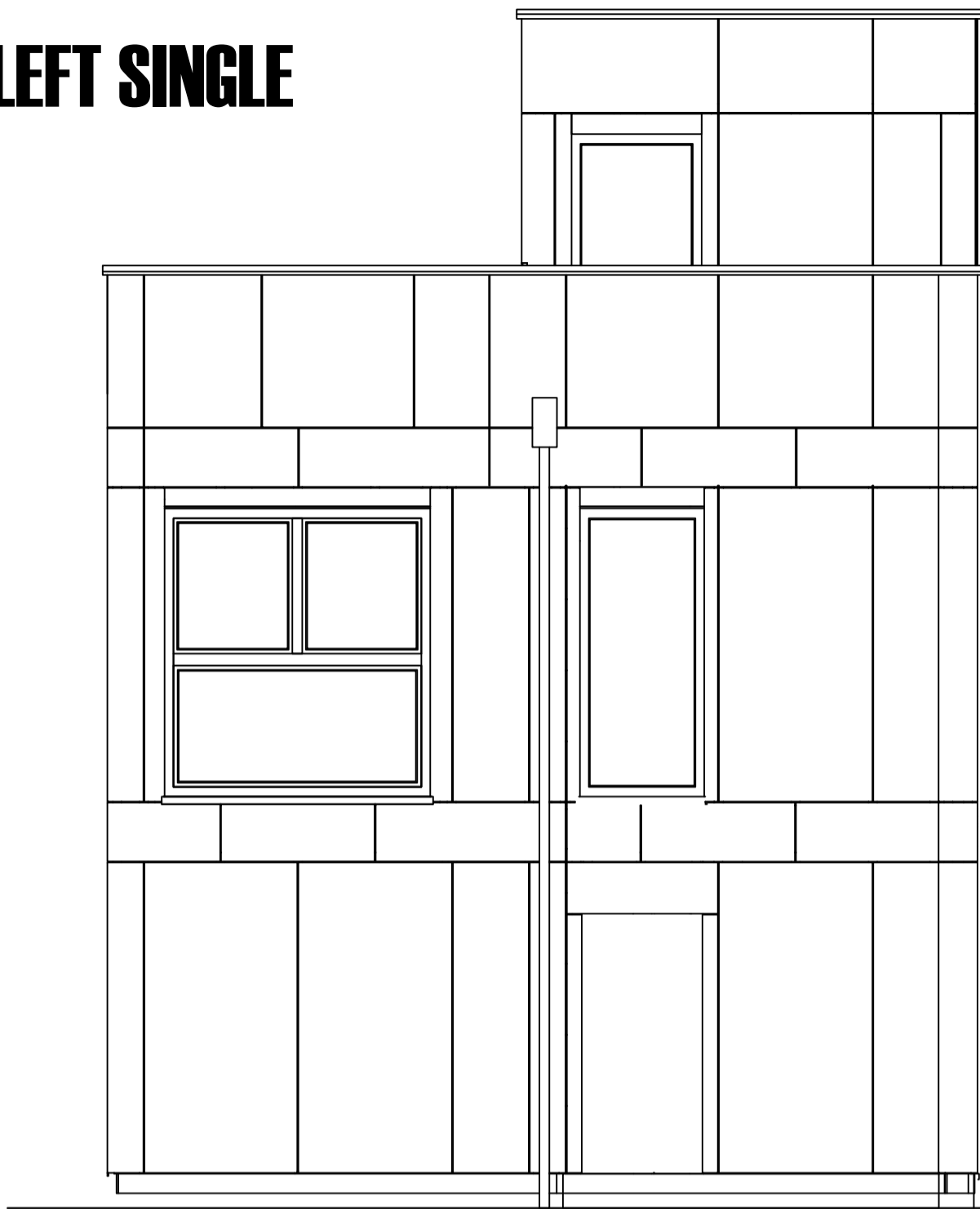
PROJEKT

VIENNA 120 LEFT SINGLE



PROJEKT

VIENNA 120 LEFT SINGLE



PROJEKT

VIENNA 120 LEFT SINGLE

